



Scott

ANGUS
CATTLE



Annual Production Sale: Feb. 28, 2024 • 1 p.m.

Selling: 50+ Angus Bulls • At the Ranch • Belgrade, NE

Join us for our LIVE AUCTION

Feb. 28, 2024 - 1 p.m.

20898 N 465 St, Belgrade, NE 68623



AUCTIONEER: Matt Lowery.....308-750-6119

REPRESENTATIVES:

Chris Beutler, Livestock Digital..... 402-380-8244
Levi Landers, Angus Journal.....308-730-1396

SALES CONSULTANT:

Wes Stokes, Albion, NE.....402-608-0013
Tyler Bettencourt, Albion, NE..... 402-741-2141

NUTRITIONIST: D. Allen Stateler PH. D., Nutrition Services Associates (NSA)
Cell Phone 402-992-2605

CATTLE VIEWING: Cattle may be viewed the morning of the sale, February 28, 2024 or prior to sale day by appointment. Call Abby Ropers at 308-550-0850

FOOD AND REFRESHMENTS: Will be available sale day at 11:30 a.m. with the sale starting at 1 PM.

ACCOMMODATIONS:

Cardinal Inn, Albion, NE 402-395-6106
Fullerton Inn, Fullerton, NE 308-536-2699

TRUCKING: We will be offering free delivery within 250 miles of Belgrade, NE 68623. Bulls are kept after the sale and buyer will be contacted for delivery schedule.

LIABILITY: All persons who attend the Bull Sale, do so at their own risk, and Scott Angus Cattle assumes no liability, legal or otherwise, for any accidents, which may occur.

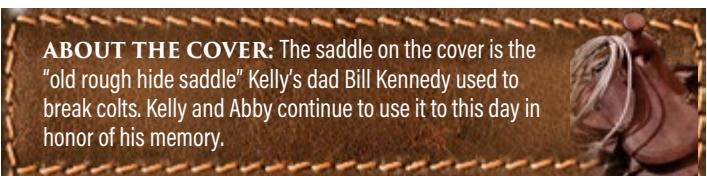
HEALTH: All cattle are accompanied by proper health certificates for shipment and have had a complete vaccination program.

INSURANCE: SAC recommends buyers insure their purchases for safe delivery and after. Lashea Bickel, Dakota Ag Insurance, will be available. Cell Phone 605-530-0872

GENETIC DEFECTS: All lots are free of all known genetic conditions monitored by the American Angus Association and have genomically enhanced EPDs.

SEMEN EVALUATION: All bulls have been semen checked by Dr Lance Kurz, Countryside Veterinary Clinic. We offer first season breeding guarantee which is 60 days from turnout.

ONLINE BIDDING: The sale will be broadcast live on DVAuction.com with real time and proxy bidding available. Videos will be posted two weeks prior to the sale. Please sign up to bid at least 24 hours in advance of the sale. If you need assistance, call Sara Kuchera, 308-520-5084 or email support@dvauction.com.



ABOUT THE COVER: The saddle on the cover is the "old rough hide saddle" Kelly's dad Bill Kennedy used to break colts. Kelly and Abby continue to use it to this day in honor of his memory.



Allen Stateler, Ph.D.
Consulting Nutritionist
Nutrition Service Associates (NSA)
402-992-2605

Welcome to the Scott Angus Cattle 2nd Annual Bull Sale. I think you will agree that the Scott Angus family has put together a powerful set of Angus bulls for your consideration. As the consulting nutritionist, I strive to develop optimal nutrition and management programs to match and express the genetic potential of the cattle while giving special attention to safeguarding soundness and reproductive longevity. At Scott Angus, the mantra is "cattle should never have a bad day" and every effort is made to uphold that ideal.

NUTRITIONAL PHILOSOPHY: The nutritional treatment of breeding stock from conception to first breeding can have a profound effect on their lifetime potential. Nutritional influences on future health and productivity have been traced as far back as early embryonic development; a concept termed "fetal programming". That is why we focus not only on the nutrient requirements of the cow throughout her life cycle, but also the nutritional factors that affect gene expression of economically important traits in the developing calf. From conception to turnout, we focus on expressing the genetic potential of the cattle without compromising structural soundness and breeding performance.

BULL DEVELOPMENT: We believe in the concept of developing bulls, not finishing them. To properly develop breeding stock, we pay special attention to their energy, protein, trace mineral, and vitamin requirements. The bulls were developed on high-roughage, moderate-energy, high-protein diet. Particular attention was given to optimal vitamin and trace mineral supplementation to promote proper reproductive development and ensure reproductive longevity. We think that you will agree that our nutritional philosophy has produced an exceptional set of fertile breeding bulls that are ready to go to work for you. Buy with confidence!

Allen Stateler, Ph.D. - Consulting Nutritionist
Nutrition Service Associates (NSA) - 402.992.2605



DVAuction
Broadcasting Real-Time Auctions



Use your phone's camera app to scan this QR code for videos.

Can't make the sale? Bid from home with DVAuction's "real-time" internet bidding service! Buying online is as easy.

1. Create an account at www.dvauction.com under the "register" tab.
2. Apply for bidding approval by clicking on the "details" tab at least 24 hours prior to the auction - a DV representative will notify you when you are approved.
3. Tune in for the sale and make your purchases!

After the sale, contact Scott Angus Cattle to arrange transportation and payment. High speed internet is required for successful bidding - be sure to check the lag-time monitor in the top left corner to ensure real-time broadcasts.

Proxy Bidding: If you can't make time to watch the sale, register a proxy bid and DVAuction will represent your bid while you're away. Look for the "proxy bid" tab on the auction listing and fill in your maximum bids. They'll handle the rest!

Having troubles? During the auction, you can type a message to the operator at any time for assistance. DVAuction support is available at (402) 474-5557.



MARLIN & KELLY SCOTT

Scott ANGUS CATTLE



ABBY & A.J. ROPERS FAMILY



SAM & STEPHANIE SCOTT FAMILY

Thank you for your interest in Scott Angus Cattle. This marks our second Bull Sale and first inaugural in-person sale! This sale features A.I.'d bull calves and ET flush calves out of our elite donors and top end registered females. These calves represent why we have chosen their mothers in our flush program and the longevity of their cow-family lineage living on at Scott Angus Cattle. Last year we introduced ourselves -- who we are and where our vision is leading us. This year we aim to prove we are here to stay and make a difference in the Angus breed. Our goals in the cattle industry are as simple as this: The 5 F words: First Feet, Foundation, and Fertility = Future! After that, you can move onto phenotype, calving ease, milk and udder structure, scrotal, and disposition.

These sale lots tell a story of our Journey. A Quest to properly showcase the registered Angus herd we've built over 30+ years and give our customers the genetic tools they need to create the future herd of their dreams. From Chimney Rock, Rio Bravo, or near AJ's old stomping grounds by Fort Hartsuff, we hold heavy Gratitude for our new and returning customers' Trust in our Scott Angus Cattle's program and sharing in our excitement of the first live auction sale. As Marlin always says "You don't buy the bull, you buy the program." This paragraph has some Easter eggs pointing to some of our family's favorite bulls in this offering.

Please don't hesitate to contact us with any questions you may have about the sale offering. We look forward to working with you and hope to see you sale day -- Wednesday, February 28th!

Sincerely, Scott Angus Cattle family

Content & Comfort = Feet & Fertility =
CONCEPTION FUTURE

- Marlin Scott**(308) 550-0202
- Kelly Scott**.....(308) 550-1726
- Sam Scott**.....(308) 550-1738
- Abby Ropers**..... (308) 550-0850
- A.J. Ropers**..... (308) 215-0172

SCOTTANGUSCATTLE.COM

E-MAIL: RANCHOFFICE@SCOTTANGUSCATTLE.COM





LOT 1 · SAC JOURNEY 3721

SAV Emblynette 3301 - Maternal Granddam of Lots 1-3, 20-22, 33-34, and 36

Genetic trendsetters with big stout frames, excellent feet, and tested safe for the high altitude ranch being top 1% in PAP. ET Maternal brother to standout top selling America bull calf of 2023 SAC Bull sale Lot #1 SAC Nebraska 2018.

Sitz Pride 200B Dam of Stellar and Paternal Granddam of Robust

Their elegant, broody SAV Renown dam by SAV Emblynette 3301, the model cow of the Angus breed, unmatched for broodiness and maternal function. 6639 is becoming a bigtime producer for SAC. She has a Birth Ratio of 4/101 and weaning ratio of 4/111. Her maternal sisters sired by SAV Resource 1441, brought \$150k, \$40K, and \$25K in the 2016 SAV Sale.



SAV Blackcap May 6639 - Dam of Lots 1-3, 20-22, 33-34



Reference Sire SITZ STELLAR 726D

BD: 01/23/16 Reg #: 18397542 Tattoo: 726D

#Benfield Substance 8506	#H A Image Maker 0415
#Mohnen Substantial 272	Benfield Edella 1105
Mohnen Glyn Mawr Elba 1758	#LT Territory 5824 of EA
	Mohnen Glyn Mawr Elba 1345
#Connealy Final Product	Connealy Product 568
SITZ Pride 200B	#Ebonista of Conanga 471
#Sitz Pride 308Y	#Sitz Upward 307R
	#Sitz Pride 44P

CED	BW	WW	YW	Milk	SC	Marb	REA	Fat	HP	Claw	Angle	SM	SC
5	-0.1	69	125	17	0.83	0.65	0.42	0.065	7.4	0.30	0.41	51	231
60	25	35	30	95	55	40	75	95	90	2	15	75	60

Stellar is a powerhouse individual that combines an outcross, proven pedigree with great maternal design. Super thick topped and deep sided bull that transmits added substance, fleshing ability and muscle shape. He is responsible for the most dominant sire line in the breed today for combined foot quality and hair shedding genetics including bulls like Resilient, Incentive and Dignity. A proven foot quality improver ranking at the very top of the Main Sire list for combined Foot Score EPDs. While he was born, raised and earned his stripes as a cowboy favorite in Montana, his top 1% Hair Shedding genetics also excel in southern environments. His dam, Sitz Pride 200B, is owned by Scott Angus Cattle.



Sitz Stellar 726D - Sire to Lots 1-19 and Grandsire to Lots 20-27 and 40-49



1 SAC JOURNEY 3721



BD: 1/3/2023 Reg #: 20798567 Tattoo: 3721

ET	BW	BWR	WW	ADJ 205	WWR	Dam's Production
	72	ET	755	738	ET	4/111

CED	BW	WW	YW	Milk	SC	Marb	REA	Fat	HP	Claw	Angle	SM	SC
4	1.2	86	137	25	0.37	-0.04	0.84	0.058	15.6	0.37	0.51	83	206
70	50	5	15	60	85	95	25	95	20	10	65	10	90

2 SAC TRAILWAY 3722



BD: 1/7/2023 Reg #: 20798570 Tattoo: 3722

ET	BW	BWR	WW	ADJ 205	WWR	Dam's Production
	89	ET	780	773	ET	4/111

CED	BW	WW	YW	Milk	SC	Marb	REA	Fat	HP	Claw	Angle	SM	SC
8	-0.4	63	104	27	0.75	0.29	0.45	0.093	13.5	0.44	0.43	78	204
35	20	55	65	45	60	90	80	95	35	30	25	15	90

LOT 2 · SAC TRAILWAY 3722

3 SAC TREK 3720



BD: 01/01/23 Reg #: 20798573 Tattoo: 3720

#Mohnen Substantial 272
Sitz Stellar 726D
 SITZ Pride 200B

#S A V Renown 3439
S A V Emblynette 6639
 S A V Emblynette 3301

#Benfield Substance 8506
 Mohnen Glyn Mawr Elba 1758
 #Connealy Final Product
 #Sitz Pride 308Y
 Rito 707 of Ideal 3407 7075
 S A V Blackcap May 4136
 #S A F 598 Bando 5175
 #S A V Emblynette 7319

BW	84
BWR	ET
WW	835
ADJ 205	811
WWR	ET
Dam's Production	4/111

CED	BW	WW	YW	Milk	SC	Marb	REA	Fat	HP	Claw	Angle	SM	SC
7	-0.9	61	104	35	0.88	0.09	0.37	0.063	12.5	0.36	0.54	74	183
45	15	60	65	10	50	95	90	95	50	10	80	25	95



SAC Nebraska 2018
 Maternal Brother to Lots 1-3,
 20-22, and 33-34

LOT 3 · SAC TREK 3720



SAV Blackcap May 6674
Dam of Lots 4-6 and 40-42

LOT 5 · SAC EXPEDITION 3726

4 SAC GRAND TOUR 3725 ANGUSGS Powered by Neogen GeneSeek

BD: 12/28/2022 Reg #: 20798577 Tattoo: 3725

ET	BW	BWR	WW	ADJ 205	WWR	Dam's Production
	77	ET	855	819	ET	3/100

CED	BW	WW	YW	Milk	SC	Marb	REA	Fat	HP	Claw	Angle	SM	SC
-5	2.6	84	143	19	0.13	0.32	0.28	0.06	10.3	0.4	0.41	66	236
95	80	10	10	95	90	85	95	95	75	15	20	45	65

5 SAC EXPEDITION 3726 ANGUSGS Powered by Neogen GeneSeek

BD: 12/31/2022 Reg #: 20798578 Tattoo: 3726

ET	BW	BWR	WW	ADJ 205	WWR	Dam's Production
	69	ET	860	832	ET	3/100

CED	BW	WW	YW	Milk	SC	Marb	REA	Fat	HP	Claw	Angle	SM	SC
0	1.1	84	144	24	0.73	0.56	0.75	0.043	18	0.46	0.43	76	282
90	50	10	10	70	60	65	35	85	4	35	25	20	25

A time honored mating for this flush brother trio – genetic distinction to simultaneously add performance and maternal value to your herd. SAC Expedition 3726 is a SAC family favorite for his calving ease head and appealing phenotype.

Their maternal masterpiece donor dam, SAV Blackcap 6674, is a beautiful, perfect uddered, massive SAV Seedstock. Her unique pedigree brings together three proven SAV cow families: Blackcap May 5530, Blackcap May 4136, and Madame

6 SAC EXCURSION 3724 ANGUSGS Powered by Neogen GeneSeek

BD: 12/31/22 Reg #: 20798575 Tattoo: 3724

BW	BWR	WW	ADJ 205	WWR	Dam's Production
85	ET	790	765	ET	3/100

#Mohnen Substantial 272
#Benfield Substance 8506
#Mohnen Glyn Mawr Elba 1758
#Connealy Final Product
#Sitz Pride 308Y
#S A V Registry 2831
#S A V Blackcap May 4136
#B C C Bushwacker 41-93
S A V May 7238

CED	BW	WW	YW	Milk	SC	Marb	REA	Fat	HP	Claw	Angle	SM	SC
3	0.6	73	118	17	1	0.6	0.44	0.056	13	0.31	0.42	69	218
75	35	25	40	95	45	60	80	95	45	2	20	35	80

Pride 0075. She weaned off at 800 lbs putting her in the top 4 ET heifers in the 2017 offering. Flush sister to donor, 6673, at Schaff Angus Valley.

Her Pathfinder grand-dam SAV Blackcap May 5530 (WR 5/108) has been one of our favorite donors at SAV creating Priority, \$156k Brand Name, \$180k Regard, and \$260K Cutting Edge. She ranks in the top three income-producing cows at \$2 Million on 113 progeny, averaging \$18k.



LOT 4 · SAC GRAND TOUR 3725



LOT 6 · SAC EXCURSION 3724



LOT 7 · SAC QUEST 3731

7 SAC QUEST 3731

ANGUSGS
Powered by Neogen GeneSeek

BD: 12/30/2022 Reg #: 20798534 Tattoo: 3731

ET	BW	BWR	WW	ADJ 205	WWR	Dam's Production
	85	ET	790	763	ET	2/94

CED	BW	WW	YW	Milk	SC	Marb	REA	Fat	HP	Claw	Angle	SM	SC
0	1.5	81	138	25	0.38	0.79	0.84	0.004	12.5	0.32	0.42	74	270
90	60	10	15	60	85	40	25	40	50	3	20	25	30

8 SAC VOYAGE 3732

ANGUSGS
Powered by Neogen GeneSeek

BD: 01/07/23 Reg #: 20798533 Tattoo: 3732

#Mohnen Substantial 272
Sitz Stellar 726D
SITZ Pride 200B

#Benfield Substance 8506
Mohnen Glyn Mawr Elba 1758
#Connealy Final Product
#Sitz Pride 308Y
#S A V Registry 2831
S A V Blackcap May 4136
#G A R Objective 7125
R B Lady Standard 305-890

#S A V Sensation 5615
Linz Lady 116-8213
R B Lady 890-116

BW	BWR	WW	ADJ 205	WWR	Dam's Production
100	ET	710	704	ET	2/94

CED	BW	WW	YW	Milk	SC	Marb	REA	Fat	HP	Claw	Angle	SM	SC
-8	5.8	81	146	24	0.63	0.64	0.78	-0.015	14.6	0.35	0.41	57	274
95	95	10	10	70	70	55	30	20	25	10	20	70	30

A well-built pairing of Stellar flush brothers who are pasture standouts for their big backends and excellent feet. Fan favorite, SAC Quest 3731, boasts Certified Angus Beef brand and SAC Voyage 3732 missed the mark by .01 point in Marbling EPD. Close enough in our book! Expect performance bull with calving ease awareness promises scale busting progeny results.

Their Maternal Grand-dam \$80K RB Lady 890-116 is a remarkable female that stamps her progeny with her impressive phenotype and performance traits - birth and growth spread that dreams are made of, top feed efficiency 50K results are made of the 116 progeny and a well-known feed efficiency of GAR Objective 7125.

Their exceptionally footed 116 Sensation dam, 8213 is making waves at Scott Angus Cattle as a new donor these past couple years with high numbered flushes! In her three years of production, she has proven to be a maternal powerhouse with four bull calves, all of which were top sellers each season and have feet like a mule.



LOT 8 · SAC VOYAGE 3732



Lady Linz 116-8213 - Dam of Lots 7-8, 24 and 46



LOT 9 · SAC PASSAGE WAY 3728

9 SAC PASSAGE WAY 3728 ANGUS GS

BD: 1/6/2023 Reg #: 20798541 Tattoo: 3728

ET	BW	BWR	WW	ADJ 205	WWR	Dam's Production
	83	ET	745	736	ET	4/99

CED	BW	WW	YW	Milk	SC	Marb	REA	Fat	HP	Claw	Angle	SM	SC
2	0.8	76	131	28	1.38	0.57	0.44	0.056	7.8	0.35	0.41	61	253
85	40	20	20	40	20	60	80	95	95	10	20	60	50



SAC Emblynette 7201
Dam of Lots 9-10 and Maternal
Sister to the Dam of Lot 26



SAC Emblynette 7302
Dam of Lot 11 and Full sister to
the Dam of Lots: 1-3, 20-22, 33-34

11 SAC WALK ABOUT 3729 ANGUS GS

BD: 01/04/23 Reg #: 20798543 Tattoo: 3729

#Mohnen Substantial 272
Sitz Stellar 726D
SITZ Pride 200B

#S A V Renown 3439
S A C Emblynette 7302
S A V Emblynette 3301

BW	BWR	WW	ADJ 205	WWR	Dam's Production
82	ET	895	878	ET	4/93

CED	BW	WW	YW	Milk	SC	Marb	REA	Fat	HP	Claw	Angle	SM	SC
4	1.7	85	146	21	1.18	0.2	0.41	0.061	10.8	0.31	0.36	60	203
70	65	5	10	85	30	95	85	95	70	2	5	65	90

An outright beast and Marlin's (Dad's) personal favorite for what a high end commercial cattlemen needs - His deep, thick, long body will demand your attention across the pen as he stands tall. Walk About earned the highest 205 day weight and second highest weaning weight of his SAC calf crop. A quick study of his BW to YW spread will prove his earning power potential to the cattlemen.

His Renown dam, 7302, is a pageant beauty with sleek jet black coat and deep soggy, angular stature. Her first progeny is a moderate Governor sired heifer, 9302, stands on her own for completeness and quality and has proven to put everything she can muster back into her calf. A clear example of her milking ability is her 2021 Scale House bull calf, SAC Scale Blaster 2848, Lot 7 on our 2023 SAC Spring Bull sale; pure power, good body length, and excellent foot score in the top 8%. A 2023 born Virtue maternal sister to Walk About, SAC Emblynette 3301, stamps a gorgeous pattern from the side and earned 13 EPDs in the top 25%.



LOT 10 · SAC PATHWAY 3727

10 SAC PATHWAY 3727 ANGUS GS

BD: 01/04/23 Reg #: 20798542 Tattoo: 3727

#Mohnen Substantial 272
Sitz Stellar 726D
SITZ Pride 200B

#S A V Resource 1441
S A C Emblynette 7201
#S A V Emblynette 4286

#Benfield Substance 8506
Mohnen Glyn Mawr Elba 1758
#Connealy Final Product
#Sitz Pride 308Y
Rito 707 of Ideal 3407 7075
S A V Blackcap May 4136
S A V Successor 1175
#S A V Emblynette 8214

BW	BWR	WW	ADJ 205	WWR	Dam's Production
72	ET	775	740	ET	4/99

CED	BW	WW	YW	Milk	SC	Marb	REA	Fat	HP	Claw	Angle	SM	SC
3	0.2	52	96	25	-0.05	0.24	0.41	0.068	14.2	0.42	0.48	61	201
75	30	85	80	60	95	90	85	95	30	20	50	60	90

A pair of supreme calving-ease Stellar flush brothers with maternal ties to the powerhouse SAC Nance County 2017 (2023 SAC Bull Sale Lot#2).

7201 one of SAC's premier donors, WR 4/99 is beautiful, phenotypically flawless, perfect uddered, and a Resource ET daughter out of SAV Emblynette 4286, (a seventh generation pathfinder and maternal monarch). 4286 averaged \$21,900 on six progeny at SAV. SAC retained her son SAC Rainfall 1747 in 2021 for in herd use. Half-interest on 7201 sold to Danny Wright from Moneta, VA for \$11,600 on SAC 2023 Belles of the Grade female sale.



LOT 11 · SAC WALK ABOUT 3729

Maternal grand dam, SAV Emblynette 3301, the maternal icon in the Angus breed has generated \$2 million in direct progeny sales. Her herd sire sons include Momentum, Hesston, First Prize, Impact, Intent, Mainstream, Inspire, Remington, and Drover.



SAC Emblynette 3309
Flush Sister to Lot 11



LOT 12 · SAC GALAVANT 3730

12 SAC GALAVANT 3730

ANGUSGS
Powered by Hoogen GeneDink

BD: 01/01/23 Reg #: 20798469 Tattoo: 3730
 #Mohnen Substantial 272 #Benfield Substance 8506
Sitz Stellar 726D Mohnen Glyn Mawr Elba 1758
 SITZ Pride 200B #Connealy Final Product
 #Sitz Pride 308Y
 #S A V Regard 4863 #S A V Resource 1441
S A C Blackcap May 7316 #S A V Blackcap May 5530
 #S A V Blackcap May 7306 #Boyd New Day 8005
 S A V Blackcap May 4136

BW	69
BWR	ET
WW	840
ADJ 205	815
WWR	ET
Dam's Production	3/110

GED	BW	WW	YW	Milk	SC	Marb	REA	Fat	HP	Claw	Angle	SM	SC
3	1.3	81	132	38	0.56	0.65	0.45	0.03	12.8	0.33	0.39	88	262
75	55	10	20	3	75	55	80	75	45	4	10	4	40

A powerfully constructed, thick, heavy-muscled armored knight ready for pasture action. He ranks in the top 2% milk EPD and top 1% in \$W and is backed by a foundation of heavy hitter females.

His maternal granddam 7306, a 16-year-old SAC pathfinder Boyd New Day direct daughter to the legendary dam SAV Blackcap May 4136. 7306 (WR 9/108) has made a name for herself with 4 natural bull progeny averaging \$18k on past SAV sales, including the 25k #1 yearling weight bull at 1707 pounds in the 2015 sale.

Galavant's stunning Regard dam, 7316, is making her mark in the SAC donor program and ranks in the top 1% WW, YW, and Milk.

A maternal Governor sister, 0316, is the dam of the high selling Doc Ryan heifer 2316 on the Belles of the Grade Female Sale last fall sold to Herbster Angus Farms.



SAC Blackcap May 7316 - Dam of Lots 12, 30, 31 and 45
Maternal Sister to Lots 23, 28, 32, 43 and 44



SAC Blackcap May 0316 - Maternal Governor Sister to Lots 12, 30, 31 and 45



LOT 13 · SAC STRONG HOLD 3738



LOT 14 · SAC STATEMENT 3741

13 SAC STRONG HOLD 3738 ANGUSGS Powered by Hoogen GenSeek

BD: 01/02/23 Reg #: 20798489 Tattoo: 3738
 #Mohnen Substantial 272 #Benfield Substance 8506
Sitz Stellar 726D Mohnen Glyn Mawr Elba 1758
 SITZ Pride 200B #Connealy Final Product
 #Sitz Pride 308Y
 S A V President 6847 #Coleman Charlo 0256
S A C Emblynette 9608 S A V Blackcap May 4136
 S A V Emblynette 3608 S A V First Class 0207
 #Sav Emblynette Diamond 6377

BW	85
BWR	108
WW	830
ADJ 205	824
WWR	106
Dam's Production	3/103

CED	BW	WW	YW	Milk	SC	Marb	REA	Fat	HP	Claw	Angle	SM	SC
-1	3.1	83	135	19	0.99	0.32	0.6	0.033	15.8	0.36	0.39	72	248
95	90	10	15	95	45	85	60	80	15	10	10	30	55

SAC Strong Hold 3738 is a sure-shot performance bull with balanced EPDs and solid phenotype.

His 5 year-old President dam, 9608, was Kelly's favorite pick of the virgin heifers of the 2019 year. She has produced two banger daughters retained in the SAC registered herd and earned a 103/3 weaning ratio. Strong Hold is her first bull calf and we are excited to see his bright future.

Second pathfinder dam, "Roanie", SAV Emblynette Diamond 6377 (dam of pathfinder donor 1181, also the dam of 7749 who sold to Herbster Angus for \$350,000, and the grand dam of Harvester who sold for \$275,000, son of 7749) – is a cornerstone donor of the Scott Angus Cattle program. You can expect big volume, good footed, heavy milking, high fertility and longevity from her prestigious family.



SAV Emblynette Diamond 6377 · Maternal 3rd Dam of lot 13 and 4th Dam of Lots 14 and 47

14 SAC STATEMENT 3741 ANGUSGS Powered by Hoogen GenSeek

BD: 01/12/23 Reg #: 20798185 Tattoo: 3741
 #Mohnen Substantial 272 #Benfield Substance 8506
Sitz Stellar 726D Mohnen Glyn Mawr Elba 1758
 SITZ Pride 200B #Connealy Final Product
 #Sitz Pride 308Y
 #LD Capitalist 316 #Connealy Capitalist 028
SAC Emblynette 1608 LD Dixie Erica 2053
 S A V President 6847 S A V Emblynette 3608

BW	76
BWR	105
WW	760
ADJ 205	834
WWR	108
Dam's Production	1/108

CED	BW	WW	YW	Milk	SC	Marb	REA	Fat	HP	Claw	Angle	SM	SC
2	3.1	88	149	22	1.26	0.44	0.62	0.011	12.3	0.27	0.39	61	249
85	90	3	5	80	25	75	55	50	50	1	10	60	50

An attractive, well-made bull with great performance potential and major cow power behind him. He ranks in the top 15% in eight EPD categories including top 4% in WW, 5% in YW, And 1% in Claw.

His first calf heifer dam, 1608, sired by LD Capitalist 316 has a received a 108/1 weaning ratio from her job-well-done on this Stellar son. A maternal sister to Lot #13 and the first pride and joy of President dam 9608. This cow family has grazed the SAC pastures for over 20 years and has consistently produced fertile females with outstanding longevity and power.

His pathfinder 4th dam, 6377, recorded a weaning ratio of 106/7 calves. She has 49 progeny in past SAV sales, including the lot 1 bulls in 2006 and 2008 SAV sales and the lead-off female in the 2007 SAV Sale.



SAC Emblynette 9608 with SAC Emblynette 1608 as a calf
 SAC Emblynette 9608 is the Dam of Lot 13 and the Maternal Granddam of Lot 13



SAC Emblynette 1241 as a bred heifer
Dam of Lot 15



SAC Emblynette 8241
Maternal Granddam of Lot 15

LOT 15 · SAC STRONG MAN 3740

15 SAC STRONG MAN 3740



BD: 01/14/23 Reg #: 20798193 Tattoo: 3740
 #Mohnen Substantial 272 #Benfield Substance 8506
Sitz Stellar 726D Mohnen Glyn Mawr Elba 1758
 SITZ Pride 200B #Connealy Final Product
 #Sitz Pride 308Y
 S A V America 8018 S A V President 6847
SAC Emblynette 1241 S A V Madame Pride 0075
 S A C Emblynette 8241 #Coleman Charlo 0256
 #S A V Emblynette 3240

BW	72
BWR	100
WW	770
ADJ 205	850
WWR	110
Dam's Production	1/110

CED	BW	WW	YW	Milk	SC	Marb	REA	Fat	HP	Claw	Angle	SM	SC
4	2.2	81	144	21	1.24	0.8	0.58	0.06	14.5	0.26	0.31	76	300
70	75	10	10	85	30	35	60	95	25	1	1	20	15

One of the top bulls raised this year!! His name is well-chosen as a "strong man" requires a strong build and strong foundation and he is just that and more!! This Certified Angus Beef bull has exciting EPD scores across the board including top 1% in Claw and Angle. He is out of a 2 year-old America donor prospect, 1241, earning a weaning ratio of 110/1 from this bull calf's growth performance.

His Charlo grand dam, 8241, was a treasured (half-interest) sale feature on the 2023 Belles of the Grade SAC female sale and she holds a special place in our hearts at Scott Angus Cattle. She demonstrates valuable maternal qualities and a kind nature you will fall in love with instantly. Taking after her sire with a moderate wedge shaped frame.

His prolific pathfinder 3rd dam, SAV Emblynette 3240, (WR 9/107, YW 7/106) has proved time, and time again her dominance in the Angus breed over the span of her 18 year production including Renown son Blackline Plainsman 9341 – a exceptional power bull who has been leading the semen sales for Sire Buyer. Her Cut Above son, Top Notch; her President son, Popular Vote; and her Ajax son, Warrior have all been retained as herd sires at SAC. 8 daughters out of 3240 are also retained in our herd.



SAV Emblynette 3240
Maternal Great Granddam of
Lots 15 and 37 and Maternal
Granddam of Lot 25

16 SAC STATURE 3735



BD: 12/31/22 Reg #: 20798492 Tattoo: 3735
 #Mohnen Substantial 272 #Benfield Substance 8506
Sitz Stellar 726D Mohnen Glyn Mawr Elba 1758
 SITZ Pride 200B #Connealy Final Product
 #Sitz Pride 308Y
 S A V Governor 6844 #Coleman Charlo 0256
S A C Emblynette 9301 S A V Blackcap May 4136
 S A C Emblynette 7301 S A V Cutting Edge 4857
 S A V Emblynette 3301

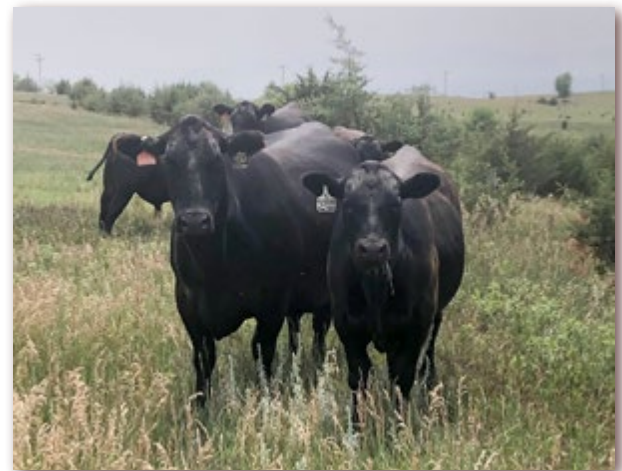
BW	78
BWR	99
WW	835
ADJ 205	823
WWR	106
Dam's Production	2/106

CED	BW	WW	YW	Milk	SC	Marb	REA	Fat	HP	Claw	Angle	SM	SC
4	1.5	73	123	14	0.98	0.36	0.24	0.049	11.3	0.33	0.43	49	186
70	60	25	35	95	45	85	95	90	65	4	25	90	95

An excellent rancher's prospect with calving ease and powerful growth, great size, and value adding to a set of feeder calves.

His Governor dam has an above herd average frame, beautiful uddered, very angular and easy to breed to. Her carcass and production scores keep improving with each calf and we look forward to her future in our registered herd.

Maternal 3rd dam, SAV Emblynette 3301, the maternal icon in the Angus breed has generated \$2 million in direct progeny sales. Her herdsire sons include Momentum, Hesston, First Prize, Impact, Intent, Mainstream, Inspire, Remington, and Drover.



SAC Emblynette 9301 and Lot 16 on summer pasture



LOT 17 · SAC STRONG ARM 3734



LOT 18 · SAC STRATEGY 3743

17 SAC STRONG ARM 3734 ANGUSGS Powered by Neogen GenSeek

BD: 01/01/23 Reg #: 20798540 Tattoo: 3734
 #Mohnen Substantial 272 #Benfield Substance 8506
Sitz Stellar 726D Mohnen Glyn Mawr Elba 1758
 SITZ Pride 200B #Connealy Final Product
 #Sitz Pride 308Y
 #S A V Seedstock 4838 #S A V Registry 2831
S A C Madame Pride 7805 S A V Blackcap May 4136
 S A V Madame Pride 9803 #S A V Bismarck 5682
 S A V Madame Pride 5290

BW	81
BWR	101
WW	740
ADJ 205	719
WWR	93
Dam's Production	4/90

CED	BW	WW	YW	Milk	SC	Marb	REA	Fat	HP	Claw	Angle	SM	SC
1	1.1	68	115	19	1.55	0.19	0.71	0.037	17	0.32	0.41	84	250
90	50	40	45	95	15	95	40	80	10	3	20	10	50

Recommended for heifers. A rare combination of calving-ease with natural thickness, capacity, muscle and moderation, in an easy-fleshing package. We especially are exciting about Strong Arm's heifer pregnancy (16.6) and scrotal (1.56) EPD scores.

His Seedstock dam has proven the longevity of the Madame Pride cow family and become one of the favorites of the 9803 daughters raised at SAC. She sports an angular build, nice patterned profile, low maintenance udder and all stacked on a good foundation. She has given us four powerful bulls and one stylish Profound sired heifer.

His exquisite Bismarck 2nd dam, SAV Madame Pride 9803, is a phenotypic powerhouse descending from the first Schaff cow to be enrolled in embryo transplant. She is a 7th consecutive generation SAV Madame Pride donor who averaged \$17K sales from just her first four progeny and a current profit center at Davenport Angus.



SAC Madame Pride 7805 - Dam of Lot 17



SAV Madame Pride 9803
Maternal Granddam of Lot 17

18 SAC STRATEGY 3743 ANGUSGS Powered by Neogen GenSeek

BD: 01/07/23 Reg #: 20798245 Tattoo: 3743
 #Mohnen Substantial 272 #Benfield Substance 8506
Sitz Stellar 726D Mohnen Glyn Mawr Elba 1758
 SITZ Pride 200B #Connealy Final Product
 #Sitz Pride 308Y
 S A V Rainfall 6846 #Coleman Charlo 0256
S A V Madame Pride 1563 S A V Blackcap May 4136
 #S A V Madame Pride 3145 #S A V Priority 7283
 S A V Madame Pride 1171

BW	55
BWR	79
WW	630
ADJ 205	692
WWR	89
Dam's Production	1/89

CED	BW	WW	YW	Milk	SC	Marb	REA	Fat	HP	Claw	Angle	SM	SC
2	2.1	62	115	24	0.91	0.74	0.61	0.032	13.1	0.35	0.44	70	243
85	70	55	45	70	50	45	55	75	40	10	30	35	60

He brings forth highly sought after genetics in the Angus breed. This Certified Beef Brand bull will be a ranch herd improver and foundational player for your future.

His Dam is out of the master mating of Rainfall to the elite Pathfinder, SAV Madame Pride 3145. She represents some of the finest work breeding Angus cattle and carries the identifiable maternal stamp of her family lineage - true foundation material. Full brother to \$140,000 SAV Riptide 1835.

His pathfinder grand dam is the third top-income-producing cow in the SAV herd. She records a weaning ratio of 107 on 7 calves. She has 21 daughters retained in the SAV herd and 20 progeny highlighting past SAV sales including the featured lot 1 bull in 2021 SAV Sale, \$225,000 SAV Anthem 0042; and the largest ribeye bull in the 2018 SAV Sale, SAV Circuit Breaker 7136.



SAV Madame Pride 3145 - Maternal Granddam of Lot 18



LOT 19 · SAC STURDY 3742



SAV Emblynette 3603 · Dam of Lot 19

19 SAC STURDY 3742

ANGUS
Powered by Neogen GenesSeek

BD: 12/24/22 Reg #: 20798593 Tattoo: 3742

#Mohnen Substantial 272
Sitz Stellar 726D
SITZ Pride 200B

#Benfield Substance 8506
Mohnen Glyn Mawr Elba 1758
#Connealy Final Product
#Sitz Pride 308Y
#S A V Final Answer 0035
#S A V Emblynette 7415
#S A V Bismarck 5682
#S A V Emblynette 5573

BW	80
BWR	101
WW	725
ADJ 205	709
WWR	91
Dam's Production	3/90

#S A V Mustang 9134
S A V Emblynette 3603
S A V Emblynette 9044

CED	BW	WW	YW	Milk	SC	Marb	REA	Fat	HP	Claw	Angle	SM	SC
10	0.3	66	111	26	0.58	0.78	0.43	0.047	15.9	0.39	0.52	86	249
20	30	45	55	55	70	40	80	90	15	15	70	5	50

Calving-ease, rock solid structure, and environmental adaptability to high altitudes (PAP -2.50, top 2%). A cowboy's pathway to get those big soggy calves.

His Mustang dam is known for her long body, docility and fertility at SAC. She has stuck every year with a calf since she started with SAC in 2015. Last year she raised a beautiful, wedgy, moderate Renovation heifer with one of the best udders in her calf crop at SAC.



SAV Emblynette 9044 · Maternal Granddam of Lot 19





LOT 21 • SAC FORT HARTSUFF 3710

A trio of flush brothers loaded with performance, maternal value, fertility and longevity, derived from a powerhouse Emblynette female line. They are lead by SAC Fort Robinson 3711, a phenotypic standout with the look of a herd bull.

6639, their elegant, broody, SAV Renown dam by SAV Emblynette 3301. 6639 is becoming a bigtime producer for SAC. She has a Birth Ratio of 4/101 and Weaning Ratio of 4/111. Her 2021 born SAV Governor bred heifer, 1639, is destined to be a future donor. Her maternal sisters sired by SAV Resource 1441, brought \$150k, 40k and 25k in the 2016 SAV Sale. 6639 is a full sister to SAC's donors 7302, 7303, and 7305.



SAV Blackcap May 6639 - Dam of Lots 1-3, 20-22, 33-34



Sitz Ellunas Elite 139Z - Paternal Grand-dam to Lots 20-27

Reference Sire **SITZ ROBUST 717H**

BD: 01/24/20 Reg #: 19677950 Tattoo: 717H

- #Mohnen Substantial 272
- #Sitz Stellar 726D
- SITZ Pride 200B
- #Sitz Upward 307R
- Sitz Ellunas Elite 139Z
- Sitz Ellunas Elite 81U
- #Benfield Substance 8506
- Mohnen Glyn Mawr Elba 1758
- #Connealy Final Product
- #Sitz Pride 308Y
- #Connealy Onward
- Sitz Henrietta Pride 81M
- #Rito 112 of 2536 Rito 616
- Sitz Ellunas Elite 146P

CED	BW	WW	YW	Milk	SC	Marb	REA	Fat	HP	Claw	Angle	SM	SC
7	1.1	60	113	20	0.93	0.31	0.57	0.015	12.5	0.37	0.43	51	212
45	50	60	50	85	45	80	55	55	45	10	25	75	75

Sitz Robust 717H was the \$50k Sitz Stellar 726D son who sold on the Spring 2021 Sitz Angus sale. He will add performance, pounds on the scale, moderate frame, and make cattle that will last for a lifetime. We like the depth, muscle, good length, and flank. Robust plugs all the holes phenotypically. SAC owns Robust's dam, Sitz Ellunas Elite 139Z with Raven Angus. 139Z has all the cow power you need, deep ribbed, broody, perfect foot and leg structure, with a stride on her walk that's hard to duplicate.



Sitz Robust 717H - Sire to Lots 20-27



LOT 20 · SAC FORT ROBINSON 3711

20 SAC FORT ROBINSON 3711 **ANGUSGS**
Powered by Neogen GeneSeek

BD: 2/2/2023 Reg #: 20798273 Tattoo: 3711

ET	BW	BWR	WW	ADJ 205	WWR	Dam's Production
	90	ET	800	877	ET	4/111

CED	BW	WW	YW	Milk	SC	Marb	REA	Fat	HP	Claw	Angle	SM	SC
-2	3.5	77	136	27	0.66	-0.04	0.73	0.051	12.9	0.46	0.55	59	204
95	95	15	15	45	65	95	40	95	45	35	85	65	90

21 SAC FORT HARTSUFF 3710 **ANGUSGS**
Powered by Neogen GeneSeek

BD: 1/28/2023 Reg #: 20798277 Tattoo: 3710

ET	BW	BWR	WW	ADJ 205	WWR	Dam's Production
	81	ET	710	762	ET	4/111

CED	BW	WW	YW	Milk	SC	Marb	REA	Fat	HP	Claw	Angle	SM	SC
8	0	65	114	26	0.13	-0.11	0.58	0.033	15	0.39	0.48	82	179
35	25	45	50	55	90	95	60	80	20	15	50	10	95

22 SAC FORT MCPHERSON 3712 **ANGUSGS**
Powered by Neogen GeneSeek

BD: 02/02/23 Reg #: 20798275 Tattoo: 3712

Sitz Stellar 726D
SITZ Robust 717H
 Sitz Ellunas Elite 139Z

#S A V Renown 3439
S A V Emblynette 6639
 S A V Emblynette 3301

#Mohnen Substantial 272
 SITZ Pride 200B
 #Sitz Upward 307R
 Sitz Ellunas Elite 81U
 Rito 707 of Ideal 3407 7075
 S A V Blackcap May 4136
 #S A F 598 Bando 5175
 #S A V Emblynette 7319

BW	BWR	WW	ADJ 205	WWR	Dam's Production
70	ET	745	841	ET	4/111

CED	BW	WW	YW	Milk	SC	Marb	REA	Fat	HP	Claw	Angle	SM	SC
4	1.9	78	134	23	0.32	0.12	0.98	-0.004	14.9	0.46	0.49	48	204
70	65	15	20	75	85	95	10	30	25	35	55	90	90



Lot 22 · SAC Fort McPherson 3712 as a calf on summer pastures.

LOT 22 · SAC FORT MCPHERSON 3712



LOT 23 · SAC FORT ATKINSON 3718



LOT 24 · SAC FORT KEARNY 3713

23 SAC FORT ATKINSON 3718 ANGUS^{GS}

BD: 01/28/23 Reg #: 20798280 Tattoo: 3718
 Sitz Stellar 726D #Mohnen Substantial 272
SITZ Robust 717H SITZ Pride 200B
 Sitz Ellunas Elite 139Z #Sitz Upward 307R
 #Boyd New Day 8005 Sitz Ellunas Elite 81U
#S A V Blackcap May 7306 #A A R New Trend
 S V F Forever Lady 57D
 S A V Blackcap May 4136 #S A V 8180 Traveler 004
 #S A V May 2397

BW	76
BWR	ET
WW	625
ADJ 205	670
WWR	ET
Dam's Production	9/108

CED	BW	WW	YW	Milk	SC	Marb	REA	Fat	HP	Claw	Angle	SM	SC
3	3.2	73	127	35	1.05	0.52	0.43	0.041	14.2	0.42	0.48	61	215
75	90	25	25	10	40	70	80	85	30	20	50	60	85

The only bull of his mating and boy he leaves a mark in growth performance and pulling all the maternal power out of his Blackcap May dam. Built for the customers looking to produce above average offspring who put extensive pounds on the scale.

His dam 7306, a 16-year-old SAC pathfinder Boyd New Day direct daughter to the legendary dam SAV Blackcap May 4136. 7306 (WR 9/108) has made a name for herself with 4 natural bull progeny averaging \$18k on past SAV sales, including the 25k #1 yearling weight bull at 1707 pounds in the 2015 sale. Also, a proud dam to the stunning Regard direct daughter 7316 who has recently started in the SAC donor program. SAC has 15 daughters retained in our herd out of 7306.



SAV Blackcap May 7306 · Dam to Lots 23, 28, 32, 43, 44
 Maternal Granddam to Lots 12 and 30

24 SAC FORT KEARNY 3713 ANGUS^{GS}

BD: 02/04/23 Reg #: 20798270 Tattoo: 3713
 Sitz Stellar 726D #Mohnen Substantial 272
SITZ Robust 717H SITZ Pride 200B
 Sitz Ellunas Elite 139Z #Sitz Upward 307R
 #S A V Sensation 5615 Sitz Ellunas Elite 81U
Linz Lady 116-8213 #S A V Registry 2831
 R B Lady 890-116 S A V Blackcap May 4136
 #G A R Objective 7125
 R B Lady Standard 305-890

BW	74
BWR	ET
WW	665
ADJ 205	736
WWR	ET
Dam's Production	2/94

CED	BW	WW	YW	Milk	SC	Marb	REA	Fat	HP	Claw	Angle	SM	SC
7	0.3	61	116	28	0.11	0.38	0.72	-0.012	14.1	0.45	0.53	68	238
45	30	60	45	40	95	80	40	20	30	30	75	40	65

A performance bull with calving ease awareness and pleasing disposition in the bull pen.

His \$80,000 Maternal Grand-dam RB Lady 890-116, owned by Ingram Angus, is a remarkable female that stamps her progeny with her impressive phenotype and performance traits – birth and growth spread that dreams are made of, top feed efficiency 50K results are made of the 116 progeny and a well-known feed efficiency of GAR Objective 7125. His 3rd dam RB Lady Standard 305-890, \$175,000 Herbster Angus Donor, produced over \$2,700,000 in progeny sales, and was a full sister to RB Active Duty.

Fort Kearny's excellent footed Sensation dam x 116, 8213, is making waves at Scott Angus Cattle as a new donor this past year with high numbered flushes! In her three years of production, she has proven to be a maternal powerhouse with four bull calves, all of which were top sellers each season and have feet like a mule.



Thank you to everyone who graciously helps us out throughout the year. Pictured (L to R) are Top Left: Robb Engel and Tommy Wroblewski; Top Right: Tyler and Leah Foland and immediate left: Sue Kennedy, Kelly's sister, riding Rimrock.



LOT 25 · SAC FORT NIOBRARA 3715

25 SAC FORT NIOBRARA 3715 ANGUSGS Powered by Neogen GeneSeek

BD: 01/08/23 Reg #: 20798260 Tattoo: 3715

Sitz Stellar 726D
SITZ Robust 717H
 Sitz Ellunas Elite 139Z
 #S A V Sensation 5615
S A C Emblynette 8248
 #S A V Emblynette 3240

#Mohnen Substantial 272
 SITZ Pride 200B
 #Sitz Upward 307R
 Sitz Ellunas Elite 81U
 #S A V Registry 2831
 S A V Blackcap May 4136
 #S A F 598 Bando 5175
 #S A V Miss Emblynette 7369

BW	78
BWR	98
WW	705
ADJ 205	701
WWR	90
Dam's Production	4/97

CED	BW	WW	YW	Milk	SC	Marb	REA	Fat	HP	Claw	Angle	SM	SC
1	1.5	67	111	22	0.8	0.03	0.52	0.001	13.1	0.44	0.45	67	203
90	60	40	55	80	55	95	70	35	40	30	35	45	90

A stout, good footed bull by Robust loaded with meat and muscle from front to back.

His dam, 8248, is a historic 3240 daughter sired to Sensation, WR 4/97. Her 2021 born Altitude bull, SAC Altitude 1114, was a standout of his calf crop and retained as a herd sire at SAC. Her fabulous 2020 born Governor heifer 0848 is a great uddered, maternally charged and raised a 2023 SAC Bull Sale Highlight, SAC Doc Reilly 2049! Talk about an influential foundation starter pack!

His 2nd dam SAV Emblynette 3240 is a cow and bull-maker, creating Heartland, Plainsman, SAV Emblynette 8172, SAC Emblynette 8245, SAC Emblynette 8248, and SAC Emblynette 0242 (one of the best phenotypic females SAC has raised - owned with Black Line Angus).

26 SAC FORT OMAHA 3716 ANGUSGS Powered by Neogen GeneSeek

BD: 01/05/23 Reg #: 20798265 Tattoo: 3716

Sitz Stellar 726D
SITZ Robust 717H
 Sitz Ellunas Elite 139Z
 #S A V Sensation 5615
S A C Emblynette 7366
 #S A V Emblynette 4286

#Mohnen Substantial 272
 SITZ Pride 200B
 #Sitz Upward 307R
 Sitz Ellunas Elite 81U
 #S A V Registry 2831
 S A V Blackcap May 4136
 S A V Successor 1175
 #S A V Emblynette 8214

BW	75
BWR	94
WW	765
ADJ 205	753
WWR	97
Dam's Production	4/100

CED	BW	WW	YW	Milk	SC	Marb	REA	Fat	HP	Claw	Angle	SM	SC
4	0.5	66	122	28	0.29	0.14	0.67	-0.012	10.4	0.5	0.42	43	205
70	35	45	35	40	85	95	50	20	75	50	20	95	90

Fort Omaha has the Angus breed textbook height, length and depth with a sound big foot. He will sire moderate birthweight with exceptional power and growth. Thick, stout, and built for the ranch world.

His Sensation dam 7366, WR 4/100 is known for her femininity and maternal power, which is well displayed through her calves each year. Her 2020 Renovation heifer calf sported a perfect udder and breathtaking phenotype.

His 2nd dam SAV Emblynette 4286 is seventh generation pathfinder and maternal monarch. 4286 averaged \$21,900 on six progeny at SAV. Her Resource daughter 7201 was a 2023 sale highlight (half-interest) on our Elite Female Sale "Belles of the Grade". She is loved for her perfect udder and flawless phenotype. 7201 has two Stellar son's selling on this sale, Lot 9 and Lot 10.



SAV Emblynette 4286
 Maternal Granddam of Lot 26.



LOT 27 · SAC FORT CALHOUN 3717

27 SAC FORT CALHOUN 3717 ANGUSGS Powered by Neogen GeneSeek

BD: 01/31/23 Reg #: 20798263 Tattoo: 3717

Sitz Stellar 726D
SITZ Robust 717H
 Sitz Ellunas Elite 139Z
 S A V Turbocharger 6882
S A C Emblynette 886
 S A C Emblynette 586

#Mohnen Substantial 272
 SITZ Pride 200B
 #Sitz Upward 307R
 Sitz Ellunas Elite 81U
 #S A V Recharge 3436
 S A V Madame Pride 5290
 S A V Pursuit 0160
 S A V Emblynette 3301

BW	81
BWR	101
WW	630
ADJ 205	684
WWR	88
Dam's Production	3/98

CED	BW	WW	YW	Milk	SC	Marb	REA	Fat	HP	Claw	Angle	SM	SC
4	2	67	113	17	0.85	0.24	0.52	0.05	8.4	0.43	0.44	60	191
70	70	40	50	95	55	90	70	90	90	25	30	65	95

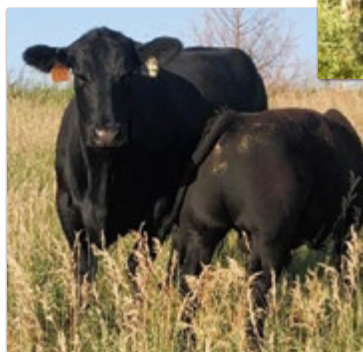
A complete, well balance bull with structural integrity and true Angus breed character. We like to think this is compliments of his paternal roots back to SITZ Pride 200B, Robust's paternal grand dam, and Sitz Ellunas Elite 139Z, Robust's dam.

His beautiful young Turbocharger dam, 886, back to Pursuit x 586, and then to 3301, creates a long line of maternal breeding to promise a great foundation to build a herd off of.

Maternal 3rd dam, SAV Emblynette 3301, the maternal icon in the Angus breed has generated \$2 million in direct progeny sales. Her herdsire sons include Momentum, Hesston, First Prize, Impact, Intent, Mainstream, Inspire, Remington, and Drover.



SAC Emblynette 8248
 Dam of Lot 25 and Maternal Granddam of Lot 37



SAC Emblynette 7366 with bull calf



SAC Emblynette 586
 Maternal Granddam of Lot 27



LOT 28 · SAC SCORECARD 3840

28 SAC SCORECARD 3840

ANGUSGS
Powered by Neogen GeneSeek

BD: 01/31/23 Reg #: 20797234 Tattoo: 3840
 Marcys Scale Crusher
S A V Scale House 0845
 S A V Blackcap May 1416
 #Boyd New Day 8005
#S A V Blackcap May 7306
 S A V Blackcap May 4136

BW	81
BWR	ET
WW	675
ADJ 205	733
WWR	ET
Dam's Production	9/108

CED	BW	WW	YW	Milk	SC	Marb	REA	Fat	HP	Claw	Angle	SM	SC
10	0.6	72	128	36	-0.29	0.39	0.65	0	9.5	0.57	0.55	70	257
20	35	25	25	5	95	80	50	35	80	80	85	35	45

He will put some power, punch and payweight into a set of feeder calves. Gentle disposition, good body length, moderate birth and high maternal EPDs.

The sons from \$275k SAV Scale House have proven the predictions about Scale House progeny to be massive volume, sheer muscle, added dimension and impressive EPD scores.

His 16-year-old pathfinder New Day dam, SAV Blackcap May 7306, is a direct daughter to legendary dam 4136 (generating \$10.2 million in sales). A postcard Angus cow, known for her fertility, longevity, and angularity. 7306 is top 1% Milk at 42 and earned a wean ratio of 108 on 9 calves. Some of 7306's maternal brothers are President, Rainfall, Governor, Rainsance, Reign, Resource, Renown, and Recharge.

Reference Sire SAV SCALE HOUSE 0845

BD: 12/13/19 Reg #: 20000000 Tattoo: 0845
 #Sitz Upward 307R
 Marcys Scale Crusher
 #Marcys Erica 393
 Rito 707 of Ideal 3407 7075
 S A V Blackcap May 1416
 S A V Blackcap May 4136
 #Connealy Onward
 Sitz Henrietta Pride 81M
 #Leachman Right Time
 G Marcy Erica 118
 #R R Rito 707
 Ideal 3407 of 1418 076
 #S A V 8180 Traveler 004
 #S A V May 2397

CED	BW	WW	YW	Milk	SC	Marb	REA	Fat	HP	Claw	Angle	SM	SC
4	2.1	78	141	17	1.02	0.28	0.71	-0.024	6.8	0.46	0.49	56	260
70	70	15	15	95	40	80	35	10	995	35	55	65	35

Scale House Intro: \$275k high selling bull at the 2021 Schaff Angus Valley sale. Scale House was a crowd favorite and to many a man among boys! Sired by Marcys Scale Crusher out of a full sister to Renown and Resource. He has body, mass, and muscle shape with calving ease numbers.



SAV Scale House 0845 - Sire of Lot 28



LOT 29 · SAC HURRICANE 3794



S A C Bessie Heiress 9101 - Dam of Lot 29

29 SAC HURRICANE 3794

ANGUSGS
Powered by *Neogen* GeneSeek

BD: 01/16/23 Reg #: 20796872 Tattoo: 3794
 S A V Rainfall 6846 #Coleman Charlo 0256
S A V Downpour 8794 S A V Blackcap May 4136
 #S A V Madame Pride 4407 #S A V Resource 1441
 S A V Madame Pride 0235
 #Jindra Acclaim Jindra 3rd Dimension
S A C Bessie Heiress 9101 Jindra Blackbird Lassy 1111
 S A C Bessie Heiress 7101 #S A V Registry 2831
 #S A V Bessie Heiress 4149

BW	83
BWR	105
WW	790
ADJ 205	823
WWR	106
Dam's Production	3/103

CED	BW	WW	YW	Milk	SC	Marb	REA	Fat	HP	Claw	Angle	SM	SC
4	2.8	75	132	27	1.19	0.75	0.61	0.071	15.8	0.48	0.54	60	260
70	85	20	20	45	30	40	55	95	15	45	80	65	40

An explosive Downpour bull calf, who weaned off at 790 lbs, and weighed 902 at booster shots. He ranks in the top 5% for phenotype of our 2023 bull calves and is as gentle as a teddy bear to the fellow rancher.

His Acclaim Dam 9101 is an easy fleshing, docile, nice uddered herd cow. WR 3/103, high in fertility, she's stuck AI all 4 years. She's the dam of 2022 SAC Elite Female Sale "Belles of the Grade" Lot 7, a fancy Downpour heifer, purchased by Blue Valley Angus, McCool Junction, NE.

4149 is a pathfinder 3rd dam and full sister, to SAV Heavy Hitter 6347.

Reference Sire SAV DOWNPOUR 8794

BD: 02/05/18 Reg #: 19250026 Tattoo: 8794
 #Coleman Charlo 0256 #O C C Paxton 730P
 S A V Rainfall 6846 Bohi Abigale 6014
 S A V Blackcap May 4136 #S A V 8180 Traveler 004
 #S A V May 2397
 #S A V Resource 1441 Rito 707 of Ideal 3407 7075
 #S A V Madame Pride 4407 S A V Blackcap May 4136
 S A V Madame Pride 0235 #S A V 004 Density 4336
 S A V Madame Pride 0075

CED	BW	WW	YW	Milk	SC	Marb	REA	Fat	HP	Claw	Angle	SM	SC
0	4.6	80	152	28	2.06	0.53	0.81	0.045	12.8	0.43	0.46	50	259
90	95	15	5	40	3	55	25	90	40	25	35	80	35

Downpour is a phenotypic standout that stands on as much bone as any bull we have seen in a long time. Extremely rugged made, he has tons of rib shape and capacity and carries extra thickness down his top and through his hip. This \$100k top selling Rainfall son of the 2019 SAV Sale is a cow-maker extraordinaire backed by his pathfinder dam, SAV Madame Pride 4407 and multimillion dollar generating great granddam, SAV Madame Pride 0075.



SAV Downpour 8794 - Sire of Lot 29 and Paternal Brother to Lot 53



SAC Blackcap May 7316 - Dam of Lots 12, 30, 31 and 45
Maternal Sister to Lots 23, 28, 32, 43 and 44



SAV Blackcap May 7306 - Dam to Lots 23, 28, 32, 43, 44
Maternal Granddam to Lots 12, 30 and 31

LOT 30 · SAC RIO BRAVO 3860

These three John Wayne bulls are absolute blockbusters! Nearly identical in majestic stature, frame, and unlimited potential for chart topping performance. They have caught the eyes of many cattlemen during pasture tours and have continued their powerful presence after weaning.

Reference Sire **SAV JOHN WAYNE 0862**

BD: 12/15/19 Reg #: 19860267 Tattoo: 0862
 #S A V Renown 3439 Rito 707 of Ideal 3407 7075
 #S A V Renovation 6822 S A V Blackcap May 4136
 S A V Madame Pride 0151 #S A V 004 Density 4336
 S A V Madame Pride 0075
 #S A V Net Worth 4200 #S A V 8180 Traveler 004
 #S A V Blackcap May 1808 SAV May 2410
 #S A V May 2397 #S A F 598 Bando 5175
 S A V May 7238

CED	BW	WW	YW	Milk	SC	Marb	REA	Fat	HP	Claw	Angle	SM	SC
2	3.7	79	140	27	1.05	0.51	0.52	0.066	11.9	0.33	0.45	68	222
80	95	15	15	45	40	55	60	95	50	3	30	35	70

John Wayne is one of the most talked about bulls from the 2021 Schaff Angus Valley Production Sale. He is a blockbuster sire with massive dimension, volume, capacity, muscle and chart topping performance. He makes the short list of the very top bulls ever produced in the history of the Schaff Angus Valley program, generating overwhelming enthusiasm from all who have seen him. He earned a 205-day weight of 1049 lbs, ranking near the very top of his highly competitive calf crop.



SAV John Wayne 0862 - Sire of Lots 30-32



Lot 30 and 31's stunning Regard dam 7316 is a second generation SAC Donor and is top 1% WW, YW, and Milk! Her pride and joy, Governor daughter, 0316, is the dam of the high selling Doc Ryan heifer 2316, on the Belles of the Grade Female Sale last fall.



LOT 31 · SAC RIO LOBO 3861

30 SAC RIO BRAVO 3860



BD: 1/18/2023 Reg #: 20794557 Tattoo: 3860

ET	BW	BWR	WW	ADJ 205	WWR	Dam's Production
	98	ET	885	912	ET	3/110

CED	BW	WW	YW	Milk	SC	Marb	REA	Fat	HP	Claw	Angle	SM	SC
0	4.2	89	150	30	1.11	0.4	0.6	0.022	10.5	0.35	0.48	59	226
90	95	3	5	25	35	80	60	65	70	10	50	65	75

31 SAC RIO LOBO 3861



BD: 01/23/23 Reg #: 20794558 Tattoo: 3861

S A V Renovation 6822
S A V John Wayne 0862
 #S A V Blackcap May 1808

#S A V Regard 4863
S A C Blackcap May 7316
 #S A V Blackcap May 7306

#S A V Renown 3439
 S A V Madame Pride 0151
 #S A V Net Worth 4200
 #S A V May 2397
 #S A V Resource 1441
 #S A V Blackcap May 5530
 #Boyd New Day 8005
 S A V Blackcap May 4136

BW	99
BWR	ET
WW	785
ADJ 205	825
WWR	ET
Dam's Production	3/110

CED	BW	WW	YW	Milk	SC	Marb	REA	Fat	HP	Claw	Angle	SM	SC
-1	4.6	88	160	38	1	0.64	0.79	0.029	14.8	0.44	0.45	73	273
95	95	3	2	3	45	55	30	75	25	30	35	25	30

32 SAC BIG JAKE 3863



BD: 01/21/23 Reg #: 20794556 Tattoo: 3863

S A V Renovation 6822
S A V John Wayne 0862
 #S A V Blackcap May 1808

#Boyd New Day 8005
#S A V Blackcap May 7306
 S A V Blackcap May 4136

#S A V Renown 3439
 S A V Madame Pride 0151
 #S A V Net Worth 4200
 #S A V May 2397
 #A A R New Trend
 S V F Forever Lady 57D
 #S A V 8180 Traveler 004
 #S A V May 2397

BW	83
BWR	ET
WW	795
ADJ 205	829
WWR	ET
Dam's Production	9/108

CED	BW	WW	YW	Milk	SC	Marb	REA	Fat	HP	Claw	Angle	SM	SC
1	2.9	69	127	37	0.33	0.54	0.57	0.041	12.9	0.37	0.47	68	230
90	85	35	25	4	85	65	65	85	45	10	45	40	70

Lot 32's New Day dam is none other than the pathfinder SAV Blackcap May 7306 herself - a natural direct daughter out of the highest income cow in the entire SAV herd, SAV Blackcap May 4136. A full cow family of standouts! 7306 is the grand dam of Lot's 30 and 31.



LOT 32 · SAC BIG JAKE 3863



LOT 33 · SAC TRUST 3702

These banger flush brothers have worlds of thickness, muscle shape, and herd bull character. Both have low birthweights and earned high weaning and 205-day weights over 1,000 lbs -- a cattleman can't complain.

SAV Emblynette 6639 is an elegant broody Renown daughter by 3301, the model cow of the Angus breed, unmatched for broodiness and maternal function. SAC Trust 3702's dam has a birth ratio of 4/101 and weaning ratio of 4/111. Her standout, top-selling America bull calf, SAC Nebraska 2018, was Lot #1 on the March 2023 SAC Bull sale. He weaned off at 965 lbs, and had the highest booster shot weight of all the bull calves weaned at SAC with 1090 lbs.

A full sister to Trust and Courage was on the 2023 Bells of the Grade Female Sale, SAC Emblynette 3633, and was purchased (half interest) by the Beran Brothers. The volume, spring of rib, and muscle mass of this Virtue heifer is exceptional!



SAV Blackcap May 6639 · Dam of Lots 1-3, 20-22, 33-34

Reference Sire **SITZ VIRTUE 11710**

BD: 02/04/20 Reg #: 19665175 Tattoo: 11710

- #Poss Achievement Poss Lasting Impact 3118
- Sitz Accomplishment 720F Poss Erica 327
- Sitz Barbaramere Nell 166D #S A V Resource 1441
- Sitz Barbaramere Nell 14Y
- #SITZ Logo 12964 #Sitz Tebow 11860
- Sitz Manor 3708 #SITZ Shauna 3152
- #Sitz Manor 1061 Sitz Cowmaker 8708
- Sitz Manor 336

CED	BW	WW	YW	Milk	SC	Marb	REA	Fat	HP	Claw	Angle	SM	SC
3	3.6	75	145	31	1.28	0.43	0.86	0.005	12.0	0.58	0.47	54	239
75	95	20	10	20	25	65	20	40	50	85	45	70	55

Here we go! The much anticipated and talked about bull group is sired by \$120k Sitz Virtue from the 2021 Sitz Angus Fall bull sale. The power, mass, bone and substance he offers is hard to find and SAC has one of his first calf crops to display. All seven of these specimens are heavy hitters.



Sitz Virtue 11710 · Sire of Lots 33-39



SAC Emblynette 7302 on pasture
Full Sister to the Dam of Lots 33-35.

LOT 34 • SAC COURAGE 3701

33 SAC TRUST 3702



BD: 12/31/2022 Reg #: 20798407 Tattoo: 3702

ET	BW	BWR	WW	ADJ 205	WWR	Dam's Production
	81	ET	855	827	ET	4/111

CED	BW	WW	YW	Milk	SC	Marb	REA	Fat	HP	Claw	Angle	SM	SC
8	0.5	68	127	25	-0.26	-0.1	0.81	0.014	14.1	0.53	0.36	58	185
35	35	40	25	60	95	95	30	55	30	65	5	70	95

34 SAC COURAGE 3701



BD: 12/29/22 Reg #: 20798405 Tattoo: 3701

Sitz Accomplishment 720F
Sitz Virtue 11710
Sitz Manor 3708

Poss Achievement
Sitz Barbaramere Nell 166D
#SITZ Logo 12964
#Sitz Manor 1061
Rito 707 of Ideal 3407 7075
S A V Blackcap May 4136
#S A F 598 Bando 5175
#S A V Emblynette 7319

#S A V Renown 3439
S A V Emblynette 6639
S A V Emblynette 3301

BW	BWR	WW	ADJ 205	WWR	Dam's Production
72	ET	865	831	ET	4/111

CED	BW	WW	YW	Milk	SC	Marb	REA	Fat	HP	Claw	Angle	SM	SC
4	1.1	66	123	32	0	0.15	0.81	0.003	16.2	0.57	0.48	58	202
70	50	45	35	15	95	95	30	40	15	80	50	70	90

35 SAC GRATITUDE 3706



BD: 12/31/22 Reg #: 20798232 Tattoo: 3706

Sitz Accomplishment 720F
Sitz Virtue 11710
Sitz Manor 3708

Poss Achievement
Sitz Barbaramere Nell 166D
#SITZ Logo 12964
#Sitz Manor 1061
Rito 707 of Ideal 3407 7075
S A V Blackcap May 4136
#Boyd New Day 8005
S A V Blackbird 1082

#S A V Renown 3439
S A C Blackbird 8296
S A V Blackbird 5296

BW	BWR	WW	ADJ 205	WWR	Dam's Production
81	101	900	871	112	4/102

CED	BW	WW	YW	Milk	SC	Marb	REA	Fat	HP	Claw	Angle	SM	SC
-3	2.5	84	142	22	1.05	-0.25	0.78	0.035	11.8	0.42	0.41	67	185
95	80	10	10	80	40	95	30	80	55	20	20	45	95

An absolute bruiser! Big stout-made specimen, wide backed, barreled middle and EPDs to support his cow-bull future. Gratitude gets the award for heaviest weaning weight at 900 lbs and is quickly spotted in the bullpen.

His 6 year-old Renown dam, 8296, is becoming quite the talk of the ranch, as she has now raised four scale bending bull calves in a row! We have fallen in love with this broody, moderate sized, good-footed momma and what she has accomplished maternally - including her phenotypically outstanding 2022 bull

calf, SAC Doc Waters 2045, Lot 10 on the 2023 SAC Bull sale happily re-homed to Tyson Cox in Purdum, NE.

His maternal grand dam, SAV Blackbird 5296, is a New Day daughter of 1082, dam of the proven maternal Genex sire SAV Pioneer 7301 and also a maternal sister to SAC's donor cow Gonsior Blackbird C1082, owned with Gonsior Simmental.



SAV Blackbird 5296
Maternal Granddam of Lot 35

LOT 35 • SAC GRATITUDE 3706



LOT 36 · SAC INTEGRITY 3705

36 SAC INTEGRITY 3705

ANGUS
Powered by Neogen GenesSeek

BD: 12/29/22 Reg #: 20798262 Tattoo: 3705
 Sitz Accomplishment 720F Poss Achievement
Sitz Virtue 11710 Sitz Barabamere Nell 166D
 Sitz Manor 3708 #SITZ Logo 12964
 #Sitz Manor 1061
 #S A V Renown 3439 Rito 707 of Ideal 3407 7075
#S A C Emblynette 7305 S A V Blackcap May 4136
 S A V Emblynette 3301 #S A F 598 Bando 5175
 #S A V Emblynette 7319

BW	81
BWR	101
WW	845
ADJ 205	813
WWR	105
Dam's Production	5/106

CED	BW	WW	YW	Milk	SC	Marb	REA	Fat	HP	Claw	Angle	SM	SC
8	0.4	63	108	35	0.58	0.29	0.58	0.037	16.8	0.4	0.36	97	223
35	35	55	60	10	70	90	60	80	10	15	5	1	80

Integrity is the answer to your herd's maternal future! His combined maternal EPDs earn him a Top 1% place in \$M and 35 in the Milk! He sports rock solid leg and foot structure, straight top, and a clean front.

His dam? Another reliable, broody, Renown daughter, with impressive bull maker results, SAC Emblynette 7305, WR 5/106. A pathfinder cow, who stuck AI all five years of her production, is bringing forward the maternal traits of her dam, 3301, the model cow of the Angus breed. 7305's America son, SAC Midwest 2016, Lot 3 WR111 on last year's bull sale displayed long-bodied, stout, and stylish features with a herd-improving EPD profile.



S A C Emblynette 7305 - Dam of Lot 36



LOT 37 · SAC HONESTY 3707

37 SAC HONESTY 3707

ANGUS
Powered by Neogen GenesSeek

BD: 12/13/22 Reg #: 20798250 Tattoo: 3707
 Sitz Accomplishment 720F Poss Achievement
Sitz Virtue 11710 Sitz Barabamere Nell 166D
 Sitz Manor 3708 #SITZ Logo 12964
 #Sitz Manor 1061
 S A V Governor 6844 #Coleman Charlo 0256
S A C Emblynette 0848 S A V Blackcap May 4136
 S A C Emblynette 8248 #S A V Sensation 5615
 #S A V Emblynette 3240

BW	78
BWR	101
WW	785
ADJ 205	758
WWR	98
Dam's Production	2/101

CED	BW	WW	YW	Milk	SC	Marb	REA	Fat	HP	Claw	Angle	SM	SC
-3	5.4	88	156	25	2.24	-0.17	0.7	-0.032	15.1	0.48	0.39	69	235
95	95	3	3	60	1	95	45	10	20	45	10	35	65

Big time growth, scrotal, and carcass on this brawny deep-bodied rascal. He ranks in the top 15% in 10 EPD categories including top 1% scrotal, and top 3% in WR and YR. The power punch needed to take your cowherd to the next level.

His 4-year-old superb Governor, dam 0848, WR 2/101 has great udder quality and a maternally charged family line. Honesty's maternal brother, SAC Doc Reilly 2049, was her first calf and has excellent performance, phenotype, and docility - a super complete bull.

His maternal grand dam, 8248 a 3240 daughter sired by Sensation, WR 4/97 has been a proven bull maker including this sale's Lot25, SAC Fort Niobrara 3715.



LOT 38 · SAC DILIGENCE 3704

38 SAC DILIGENCE 3704

ANGUS
Powered by *Moggen GenScout*

BD: 01/25/23	Reg #: 20798252	Tattoo: 3704
Sitz Accomplishment 720F	Poss Achievement	
Sitz Virtue 11710	Sitz Barbaramere Nell 166D	
Sitz Manor 3708	#SITZ Logo 12964	
	#Sitz Manor 1061	
	#Coleman Charlo 0256	
S A V President 6847	S A V Blackcap May 4136	
S A C Madame Pride 0804	#S A V Renown 3439	
S A C Madame Pride 7804	S A V Madame Pride 9803	

CED	BW	WW	YW	Milk	SC	Marb	REA	Fat	HP	Claw	Angle	SM	SC
-1	4.9	91	149	25	0.64	-0.08	0.98	-0.007	12.7	0.48	0.42	72	230
95	95	2	5	60	70	95	10	25	45	45	20	30	70

Hearty-made burly bull with high growth values, great ribeye, and perfect height. President Dam, 0804, is a genetic treasure with the famed Madame Pride lineage back to 3rd dam 5290 who continues in production at Mohnen Angus after 18 years of age. SAC Madame Pride 0804 (BR 2/106, WR 2/109) is creating quite the reputation with her first calf, SAC Doc Reeder, a high seller on SAC's 2022 Bull sale, this heavy bodied Diligence, and recently birthed her first female progeny -- a lovely feminine Craftsman heifer.

3rd dam 9803, a 7th consecutive generation SAV Madame Pride donor, the anchor female of Davenport Angus embryo program. 9803's outstanding first four progeny in SAV sale averaged over \$17k.



LOT 39 · SAC DISCIPLINE 3703

39 SAC DISCIPLINE 3703

ANGUS
Powered by *Moggen GenScout*

BD: 01/26/23	Reg #: 20798254	Tattoo: 3703
Sitz Accomplishment 720F	Poss Achievement	
Sitz Virtue 11710	Sitz Barbaramere Nell 166D	
Sitz Manor 3708	#SITZ Logo 12964	
	#Sitz Manor 1061	
	#Coleman Charlo 0256	
#S A V Raindance 6848	S A V Blackcap May 4136	
S A C Elba 9233	#Boyd New Day 8005	
S A V Elba 4236	S A V Elba 1094	

CED	BW	WW	YW	Milk	SC	Marb	REA	Fat	HP	Claw	Angle	SM	SC
10	2.5	73	134	34	1.32	0.28	1.03	-0.01	16.7	0.48	0.41	77	265
20	80	25	20	10	25	90	10	25	10	45	20	20	35

Make sure you find this beefcake in the pen and check out his depth of hip, large scrotal and calving ease head. His physique matches up to his balance EPD profile and strong maternal lineage.

His Raindance dam, SAC Elba 9233, has a lengthy body, straight top, and high-capacity bag. She raised a stand out LD Capitalist 316 bull as a first calf heifer and a powerful scale house in 2022. She is a flush sister to SAV Elba 9893 (dam of SAV Bandit 2115) born and raised at SAC who was a numerous championship winning show heifer for Kourtney Schaff with Schaff Angus Valley.

Her maternal grand dam, Elba 4236, is a beautiful deep bodied third generation SAV embryo donor and was in production with SAC for over five years showing her fertile longevity. SAC retained eight females in the herd including her 2020 born ET President daughter, 0236, a super maternal broody donor prospect with excellent milk.



SAC Elba 9233 - Dam of Lot 39



SAV Elba 4236 - Maternal Granddam of Lot 39



LOT 40 · SAC CHIMNEY ROCK 3204



SAV Blackcap May 6674 · Dam of Lots 4-6 and 40-42

The Resilient triple threat flush brothers out of the proven SAC donor 6674 combines so many positives including monumental maternal value, consistent uniformity and potent performance. Their flush sister, SAC Blackcap May 3671, is moderate made with excellent disposition, foot structure, high fertility, and noteworthy top 1% \$M.

His maternal masterpiece donor dam, SAV Blackcap 6674, is a beautiful, perfect uddered, massive SAV Seedstock. Her unique pedigree brings together three proven SAV cow families: Blackcap May 5530, Blackcap May 4136, and Madame Pride 0075. She weaned off at 800 lbs putting her in the top 4 ET heifers in the 2017 offering. Flush sister to donor, 6673, at Schaff Angus Valley.

Pathfinder grand-dam SAV Blackcap May 5530 (WR 5/108) has been one of our favorite donors at SAV creating Priority, \$156k Brand Name, \$180k Regard, and \$260K Cutting Edge. She ranks in the top three income-producing cows at \$2 Million on 113 progeny, averaging \$18k.

Reference Sire **SITZ RESILIENT 10208**

BD: 02/15/18 Reg #: 19057457 Tattoo: 10208

#Mohnen Substantial 272 #Benfield Substance 8506
 #Sitz Stellar 726D Mohnen Glyn Mawr Elba 1758
 SITZ Pride 200B #Connealy Final Product
 #Sitz Pride 308Y
 #Sitz Top Game 561X #GDAR Game Day 449
 Sitz Miss Burgess 1856 #Sitz Pride 88T
 Sitz Miss Burgess 4381 Sitz Rainmaker 10899
 Sitz Miss Burgess 1609

CED	BW	WW	YW	Milk	SC	Marb	REA	Fat	HP	Claw	Angle	SM	SC
7	0.6	75	133	22	1.13	0.99	0.56	0.018	16.9	0.32	0.35	86	277
45	35	20	20	75	35	15	55	60	10	3	3	5	25



Sitz Resilient 10208 · Sire of Lots 40-49 and Paternal Brother to Lots 1-19

The high selling bull at Sitz Angus Ranch 2019 Fall Bull Sale. Commanding a purchase price of \$165k. Resilient has the potential to be one of the most impactful sires the Angus breed has to offer with an outstanding maternal pedigree and design, with elite foot score values and \$M.



40 SAC CHIMNEY ROCK 3204 ANGUSGS Powered by Neogen GeneSeek

BD: 1/10/2023 Reg #: 20794928 Tattoo: 3204

ET	BW	BWR	WW	ADJ 205	WWR	Dam's Production							
	76	ET	990	991	ET	3/100							
CED	BW	WW	YW	Milk	SC	Marb	REA	Fat	HP	Claw	Angle	SM	SC
5	0.6	77	129	30	1.08	0.7	0.35	0.024	16.3	0.38	0.4	89	242
60	35	15	25	25	40	50	90	65	15	10	15	4	60

41 SAC RIM ROCK 3203 ANGUSGS Powered by Neogen GeneSeek

BD: 1/13/2023 Reg #: 20798667 Tattoo: 3203

ET	BW	BWR	WW	ADJ 205	WWR	Dam's Production							
	83	ET	765	774	ET	3/100							
CED	BW	WW	YW	Milk	SC	Marb	REA	Fat	HP	Claw	Angle	SM	SC
6	0.8	82	133	24	1.3	0.62	0.45	0.059	17.1	0.46	0.37	87	253
55	40	10	20	70	25	55	80	95	10	35	10	5	50

LOT 41 · SAC RIM ROCK 3203

42 SAC PLYMOUTH ROCK 3205 ANGUSGS Powered by Neogen GeneSeek

BD: 01/13/23 Reg #: 20798666 Tattoo: 3205

Sitz Stellar 726D
Sitz Resilient 10208
 Sitz Miss Burgess 1856
 #S A V Seedstock 4838
S A V Blackcap May 6674
 #S A V Blackcap May 5530

#Mohnen Substantial 272
 SITZ Pride 200B
 #Sitz Top Game 561X
 Sitz Miss Burgess 4381
 #S A V Registry 2831
 S A V Blackcap May 4136
 #B C C Bushwacker 41-93
 S A V May 7238

BW	ET
60	ET
WW	680
ADJ 205	688
WWR	ET
Dam's Production	3/100

CED	BW	WW	YW	Milk	SC	Marb	REA	Fat	HP	Claw	Angle	SM	SC
4	2.1	72	120	34	1.13	0.51	0.49	0.033	16.8	0.31	0.41	85	242
70	70	25	40	10	35	70	75	80	10	2	20	10	60



LOT 42 · SAC PLYMOUTH ROCK 3205



LOT 44 · SAC BLACKSTONE 3201

43 SAC GEMSTONE 3200



BD: 1/16/2023 Reg #: 20798673 Tattoo: 3200

ET	BW	BWR	WW	ADJ 205	WWR	Dam's Production
	75	ET	755	773	ET	9/108

CED	BW	WW	YW	Milk	SC	Marb	REA	Fat	HP	Claw	Angle	SM	SC
9	-0.3	80	137	39	0.58	0.56	0.72	0.045	16.3	0.45	0.47	72	254
30	20	10	15	2	70	65	40	90	15	30	45	30	45

A treasured calving ease duo – sound, athletic, aggressive breeders made for big range country and built to last in high altitudes and cover large herds. It's hard to find any holes in their EPD profile with an incredible spread between BW and YW, 39 in the milk, pleasing feet scores, and reliable heifer pregnancy projection.

Their 16-year-old pathfinder dam, SAV Blackcap May 7306, is a direct daughter to legendary dam 4136 (generating \$10.2 million in sales). A postcard Angus cow, known for her fertility, longevity, and angularity. We haven't found a herd sire that doesn't work on this donor. In 2022, SAC made a strategic Sim-Angus move mating 7306 to Simmental breeding king, Bankroll created a one-of-a-kind collection of five massive power bulls featured on the 2023 SAC Bull Sale. One retained flush brother, SAC Riverbank 2113K, was a breeding machine in our virgin heifer pens this past spring. We were fortunate enough to get one heifer 2306K, out of this unique mating. She's getting ready to calve, and we're tickled to say she's carrying on the 7306 tradition of a beautiful udder.

44 SAC BLACKSTONE 3201



BD: 01/12/23 Reg #: 20798674 Tattoo: 3201

Sitz Stellar 726D
Sitz Resilient 10208
 Sitz Miss Burgess 1856

#Boyd New Day 8005
#S A V Blackcap May 7306
 S A V Blackcap May 4136

BW	75
BWR	ET
WW	725
ADJ 205	731
WWR	ET
Dam's Production	9/108

CED	BW	WW	YW	Milk	SC	Marb	REA	Fat	HP	Claw	Angle	SM	SC
9	0.5	77	135	39	0.55	0.74	0.44	0.039	14.9	0.31	0.37	77	256
30	35	15	15	2	75	45	80	85	25	2	10	20	45



LOT 45 · SAC GRITSTONE 3202

45 SAC GRITSTONE 3202



BD: 01/25/23 Reg #: 20801078 Tattoo: 3202

Sitz Stellar 726D
Sitz Resilient 10208
 Sitz Miss Burgess 1856

#S A V Regard 4863
S A C Blackcap May 7316
 #S A V Blackcap May 7306

#Mohnen Substantial 272
 SITZ Pride 200B
 #Sitz Top Game 561X
 Sitz Miss Burgess 4381
 #S A V Resource 1441
 #S A V Blackcap May 5530
 #Boyd New Day 8005
 S A V Blackcap May 4136

BW	93
BWR	ET
WW	815
ADJ 205	864
WWR	ET
Dam's Production	3/110

CED	BW	WW	YW	Milk	SC	Marb	REA	Fat	HP	Claw	Angle	SM	SC
-1	3.2	88	146	34	1.1	0.46	0.67	0.02	17.5	0.34	0.36	84	259
95	90	3	10	10	35	75	50	60	10	5	5	10	40

Expect added performance from this ET mating, and good pay weights at sale time. Gritstone daughters will out milk your favorite milkin' Jessie and throw perfect footed and large scrotal bulls.

His Regard dam, 7316, WR 3/110 is the talk of the ranch right now with fantastic flushing results on her first year as a SAC donor. Gritstone's rock solid EPD profile is no surprise when you take a look at 7316's and notice that 15 EPD categories in the top 15% -- including WW, YW, Milk, CW, and \$W in the top 1%!



LOT 46 · SAC GRANITE 3206

46 SAC GRANITE 3206

BD: 01/08/23 Reg #: 20798649 Tattoo: 3206

Sitz Stellar 726D
Sitz Resilient 10208
 Sitz Miss Burgess 1856

 #S A V Sensation 5615
Linz Lady 116-8213
 R B Lady 890-116

#Mohnen Substantial 272
 SITZ Pride 200B
 #Sitz Top Game 561X
 Sitz Miss Burgess 4381
 #S A V Registry 2831
 S A V Blackcap May 4136
 #G A R Objective 7125
 R B Lady Standard 305-890



BW	80
BWR	ET
WW	770
ADJ 205	765
WWR	ET
Dam's Production	2/94

CED	BW	WW	YW	Milk	SC	Marb	REA	Fat	HP	Claw	Angle	SM	SC
1	1.2	65	114	36	0.72	0.51	0.77	-0.033	21.6	0.27	0.41	110	279
90	50	45	50	5	65	70	35	10	1	1	20	1	25

A major league curve bender with big hip, excellent spring of rib, and impressive big foot that will catch the cowboy's eye. He reached 950 lbs when getting his booster shots a month after weaning and his EPD profile is semen bull worthy with RB Lady lineage reaching back to the famous \$175k RB Lady Standard 305-890 - full sister to RB Active Duty.



His outstanding 116 Sensation dam, 8213 has four fabulous sale lots in this offering and stamps each of them with solid built frame, big rump, and perfect feet. In her three years of production, she has proven to be a maternal powerhouse with four bull calves, all of which were the pick of the pen for the strapping stature.

His \$80K Maternal Grand-dam RB Lady 890-116 is a breed leader in feed efficiency, impressive phenotype and performance. She recorded 7.8% IMF and a 13.9 inch RE at 1,000 lbs. while in pasture, exemplifying her carcass potential.

47 SAC SANDSTONE 3209

BD: 01/11/23 Reg #: 20798585 Tattoo: 3209

Sitz Stellar 726D
Sitz Resilient 10208
 Sitz Miss Burgess 1856

 #S A V Raindance 6848
SAC Emblynette Diamond 1617
 SAC Emblynette Diamond 617

#Mohnen Substantial 272
 SITZ Pride 200B
 #Sitz Top Game 561X
 Sitz Miss Burgess 4381
 #Coleman Charlo 0256
 S A V Blackcap May 4136
 #S A V Registry 2831
 SAV Emblynette Diamond 8517



BW	84
BWR	115
WW	715
ADJ 205	786
WWR	101
Dam's Production	1/101

CED	BW	WW	YW	Milk	SC	Marb	REA	Fat	HP	Claw	Angle	SM	SC
-1	3.9	69	109	15	1.61	0.96	0.45	0.041	17	0.5	0.47	76	249
95	95	35	60	95	10	25	80	85	10	50	45	20	50

A level topped bonafide beef bull with body, large scrotal, and balance. He's out of a up-and-coming first calf heifer and earned the Certified Beef Brand. We love the marbling, heifer pregnancy, and PAP EPDs on this guy!

His pleasant natured Raindance dam, 1617, WR 1/101 has one of the most beautiful udders of her calf group. She takes a strong resemblance to her prolific Pathfinder granddam, SAV Emblynette Diamond 6377, who served the SAV program for 7+ years (fourth highest income-producing cows in SAV history) and her 10 year donor career here at the SAC ranch and became a cornerstone to our cowherd.



LOT 47 · SAC SANDSTONE 3209



LOT 48 · SAC LIMESTONE 3207

48 SAC LIMESTONE 3207



BD: 01/30/23 Reg #: 20798625 Tattoo: 3207
 Sitz Stellar 726D #Mohnen Substantial 272
Sitz Resilient 10208 SITZ Pride 200B
 Sitz Miss Burgess 1856 #Sitz Top Game 561X
 #LD Capitalist 316 Sitz Miss Burgess 4381
S A C Blackcap May 0819 #Connealy Capitalist 028
 S A C Blackcap May 8019 LD Dixie Erica 2053
 RB Confirmed 02-4524
 S A V Blackcap May 8962

BW	79
BWR	103
WW	660
ADJ 205	751
WWR	97
Dam's Production	2/96

CED	BW	WW	YW	Milk	SC	Marb	REA	Fat	HP	Claw	Angle	SM	SC
2	3.1	83	140	27	1.02	0.69	0.51	0.06	17.1	0.39	0.43	69	278
85	90	10	15	45	40	50	70	95	10	15	25	35	25

Here is a bull to inject muscle, substance and shape with balanced EPDs and looks to be a breeder of great females. He is a unique and valuable breeding piece selling from a time-honored cow family.

His LD Capitalist dam, 0819, is a true herd cow builder and Belles of the Grade special feature sold to Dylan Meurer in Aquilla, TX. Her maternal EPDs presence includes Top 10% in 6 EPD categories including top 1% in Hair Shed, top 2% in Heifer Pregnancy, and top 5% in \$M.

His maternal 3rd dam 8962, a full sister to 4136, has that timeless Angus look: sleek ebony coat, feminine appeal and power combined. She is the proud dam of gorgeous Pathfinder SAV Blackcap May 0024 purchased by Ingram Angus - the #1 Indexing cow of her entire calf crop, WR 5/112



LOT 49 · SAC QUARTZ 3208

49 SAC QUARTZ 3208



BD: 01/29/23 Reg #: 20798617 Tattoo: 3208
 Sitz Stellar 726D #Mohnen Substantial 272
Sitz Resilient 10208 SITZ Pride 200B
 Sitz Miss Burgess 1856 #Sitz Top Game 561X
 #S A V Sensation 5615 Sitz Miss Burgess 4381
S A C Elba 8406 #S A V Registry 2831
 S A V Elba 1406 S A V Blackcap May 4136
 Rito 707 of Ideal 3407 7075
 S A V Elba 1094

BW	82
BWR	103
WW	720
ADJ 205	776
WWR	100
Dam's Production	1/100

CED	BW	WW	YW	Milk	SC	Marb	REA	Fat	HP	Claw	Angle	SM	SC
0	3.1	79	129	28	0.58	0.55	0.58	-0.054	14.6	0.47	0.46	79	233
90	90	15	25	40	70	65	60	1	25	40	40	15	70

A rugged natural bull calf out of 8406, known for her maternal strengths and being fabulous bull maker. His paternal pedigree will keep his owner satisfied with heavy weighing steers, premium carcass, and sticky fertile females with lineage back to paternal 3rd dam and SAC donor, Sitz Pride 200B.

His Sensation dam, 8406, is moderate sized, great rib shape, and dependable udder. One of our favorite past sons of her's, a banger sired to LD Capitalist 316, sold to Lovejoy Cattle Co, in South Dakota from the 2020 calf crop. Her first flush to Tehama Patriarch was a homerun creating seven live calves from seven embryos and two are lot #50 and #51 on this sale.



S A C Blackcap May 0819 · Dam of Lot 48



SAC Elba 8406 · Dam of Lots 49-51



LOT 50 · SAC ABRAHAM 3020



LOT 51 · SAC ISAAC 3021

50 SAC ABRAHAM 3020

ANGUSGS
Powered by Neogen GenScan

BD: 1/15/2023 Reg #: 20798182 Tattoo: 3020

ET	BW	BWR	WW	ADJ 205	WWR	Dam's Production
	78	ET	815	831	ET	1/100

CED	BW	WW	YW	Milk	SC	Marb	REA	Fat	HP	Claw	Angle	SM	SC
5	1.8	84	146	30	0.58	0.41	1.08	-0.007	16.9	0.4	0.43	75	275
60	65	10	10	25	70	80	5	25	10	15	25	25	30

51 SAC ISAAC 3021

ANGUSGS
Powered by Neogen GenScan

BD: 01/17/23 Reg #: 20798178 Tattoo: 3021

#S S Niagara Z29
Tehama Patriarch F028
 Tehama Elite Blackbird D826
 #S A V Sensation 5615
S A C Elba 8406
 S A V Elba 1406

BW	BWR	WW	ADJ 205	WWR	Dam's Production
79	ET	745	765	ET	1/100

CED	BW	WW	YW	Milk	SC	Marb	REA	Fat	HP	Claw	Angle	SM	SC
7	0.8	76	143	34	0.57	0.32	0.77	-0.025	14.7	0.46	0.4	68	248
45	40	20	10	10	70	85	35	10	25	35	15	40	55

Two brawny flush brothers out of a fresh new mating to Tehama Patriarch F028 are a grand opportunity to stimulate the Angus gene pool with powerful phenotype and explosive growth.

Their maternal granddam, Elba 1406, a powerful, broody, and deep bodied donor cow and maternal sister to SAV Peacemaker 3179. Her \$100k dam, SAV Elba 1094, is a model Angus cow, the #1 milk EPD and ranks in the top 3 highest-income-producing cows in SAV history.

Their flush sister, SAC Elba 3402, has a gorgeous feminine look with major calving ease, amazing growth, and high heifer pregnancy EPDs.



Reference Sire TEHAMA PATRIARCH F028

BD: 02/03/17 Reg #: 18981191 Tattoo: F028

#Hoover Dam
 #S S Niagara Z29
 Jet S S X144
 #Connealy Thunder
 Tehama Elite Blackbird D826
 Tehama Elite Blackbird Z630
 #SydGen C C & 7
 #Erica of Ellston C124
 #B/R New Day 454
 JET S S T151
 #Baldrige Kaboom K243 KCF
 #Parka of Conanga 241
 #MCC Daybreak
 Tehama Elite Blackbird T766

CED	BW	WW	YW	Milk	SC	Marb	REA	Fat	HP	Claw	Angle	SM	SC
14	-1.8	66	131	30	1.30	0.84	0.80	0.019	18.4	0.42	0.44	80	289
5	5	45	25	25	25	25	25	60	3	20	30	10	15

A record setter from the Tehama program and highlight of the 2018 USA Fall selling season - his sons have already topped both their 2020 and 2021 bull sales. Bullet proof maternal pedigree with the power, data and phenotype to produce both quality females and in demand, high satisfaction sons. Patriarch is a powerful phenotype bull with top 3% calving ease, explosive top 6% for all growth EBVs and excellent moderate mature cow weight EBVs. Paternal grand-son to legendary sire, Hoover Dam.



Tehama Patriarch F028 - Sire of Lots 50-52



LOT 52 · SAC JACOB 3023

52 SAC JACOB 3023

ANGUS
GS
Powered by Neogen GeneSeek

BD: 01/26/23 Reg #: 20798192 Tattoo: 3023

#S S Niagara Z29 #Hoover Dam
Tehama Patriarch F028 Jet S S X144
 Tehama Elite Blackbird D826 #Connealy Thunder
 Tehama Elite Blackbird Z630
 S A V Cutting Edge 4857 #S A V Harvester 0338
S A C Emblynette 8184 #S A V Blackcap May 5530
 S A V Emblynette 2184 #S A V 707 Rito 9969
 #S A V Emblynette 9981

BW	60
BWR	85
WW	580
ADJ 205	686
WWR	89
Dam's Production	3/97

CED	BW	WW	YW	Milk	SC	Marb	REA	Fat	HP	Claw	Angle	SM	SC
10	0.2	62	122	20	1.61	0.6	0.63	0.015	21.8	0.5	0.5	70	240
20	30	55	35	90	10	60	55	55	1	50	60	35	60

SAC's choice for the picture perfect heifer bull - calving ease head, smooth shoulder, and a Patriarch power punch! Fully loaded with maternal heritage, Jacob inherited his dam's awesome heifer pregnancy EPD as he earned top 1% of his calf crop.

His Cutting Edge dam has big volume, good sound structure, and always comes through. She has gained clout on the ranch through her five consistently powerful calves. Her 2021 Governor sired bull was an absolute playmaker with massive front, depth, and well-balanced - sold to Johnny Jeffrey of Norfolk, NE.

His elegant Rito 9969 granddam, 2184, is a fourth generation SAV embryo donor with a notably great udder. The maternal pathfinder granddam by Right Time is a maternal sister to Predominant and now serves as a donor for Brooking Angus Ranch.



S A C Emblynette 8184 - Dam of Lot 52





LOT 53 · SAC SPRING RAIN 3846

53 SAC SPRING RAIN 3846



Powered by Hoogen GenSeek

BD: 02/02/23 Reg #: 20797386 Tattoo: 3846

#Coleman Charlo 0256
S A V Rainfall 6846
 S A V Blackcap May 4136

#O C C Paxton 730P
 Bohi Abigale 6014
 #S A V 8180 Traveler 004
 #S A V May 2397
 #Sitz Traveler 8180
 Boyd Forever Lady 8003
 #S A F 598 Bando 5175
 #S A V Emblynette 7319

BW	74
BWR	ET
WW	555
ADJ 205	607
WWR	ET
Dam's Production	7/103

#S A V 8180 Traveler 004
S A V Emblynette 4408
 S A V Emblynette 1182

CED	BW	WW	YW	Milk	SC	Marb	REA	Fat	HP	Claw	Angle	SM	SC
8	-0.4	53	97	31	0.18	0.52	0.27	0.043	14.3	0.54	0.48	60	212
35	20	80	80	20	90	70	95	85	30	70	50	65	85

A historic 4408 son sired to SAV Rainfall 6846 - A double shot of Traveler 004 coming through in his muscle, length and sleep-all-night calving ease. He has a nice soft look, good Rainfall quality feet, and docility in the pen.

SAC foundation donor SAV Emblynette 4408 WR 7/103 (dam of \$150k Emblynette 7411 and \$80k SAV Birthstone 8248). She is also SAV Predominant's full sister who was raised as a calf at SAC ranch.

SAC retained six maternal sisters to Spring Rain, including his full flush sister, SAC Emblynette 3407, who has displays extreme femininity, stylish head, and moderate build.



SAC Emblynette 8008 - Maternal Sister to Lot 53

Reference Sire SAV RAINFALL 6846

BD: 02/03/17 Reg #: 18981191 Tattoo: F028

#O C C Paxton 730P
 #Coleman Charlo 0256
 Bohi Abigale 6014

#S A V 8180 Traveler 004
 S A V Blackcap May 4136
 #S A V May 2397

O C C Focus 813F
 O C C Blackbird 736K
 #Sitz Traveler 8180
 S A V Abigale 6062
 #Sitz Traveler 8180
 Boyd Forever Lady 8003
 #S A F 598 Bando 5175
 S A V May 7238

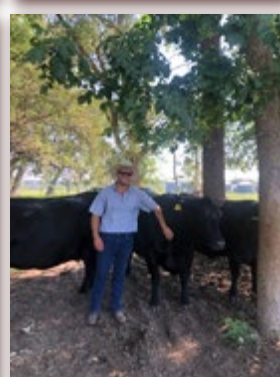
CED	BW	WW	YW	Milk	SC	Marb	REA	Fat	HP	Claw	Angle	SM	SC
7	0.4	56	109	26	0.90	0.72	0.70	0.005	12.1	0.34	0.39	81	257
45	35	70	55	50	50	35	35	40	50	4	10	10	40

He sires added length, soundness and unmistakable herd bull presence in his sons. His daughters are stunning in an elegant maternal package. Rainfall sets himself apart with his dominating hip and rear-leg structure with muscle shape and flawless phenotype. A Weaning leader that offers strong MARB and REA predictions in an easy fleshing, big-bodied, good footed design. He brings Calving Ease, maternal strength and performance together - fundamental elements to build from. Born and raised at Scott Angus Cattle ranch through our SAV embryo transfer project partnership.



S A V Rainfall 6846

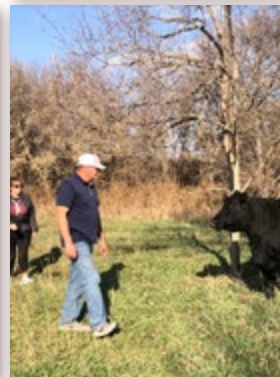
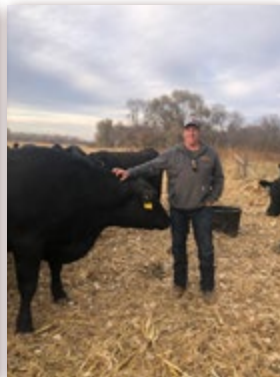






Scott
ANGUS
CATTLE 

**THANK YOU FOR TOURING
SCOTT ANGUS CATTLE!**
You're welcome here any time!





**20898 North 465th ST
Belgrade, NE 68623**

**TIME SENSITIVE MATERIAL
PLEASE DELIVER IMMEDIATELY**

